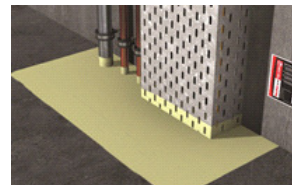


fischer FFSC FireStop Compound

Substrate: Concrete Floor
Type of penetration: Metallic Pipes

APPLICATION



APPROVALS
ETA 14/0387



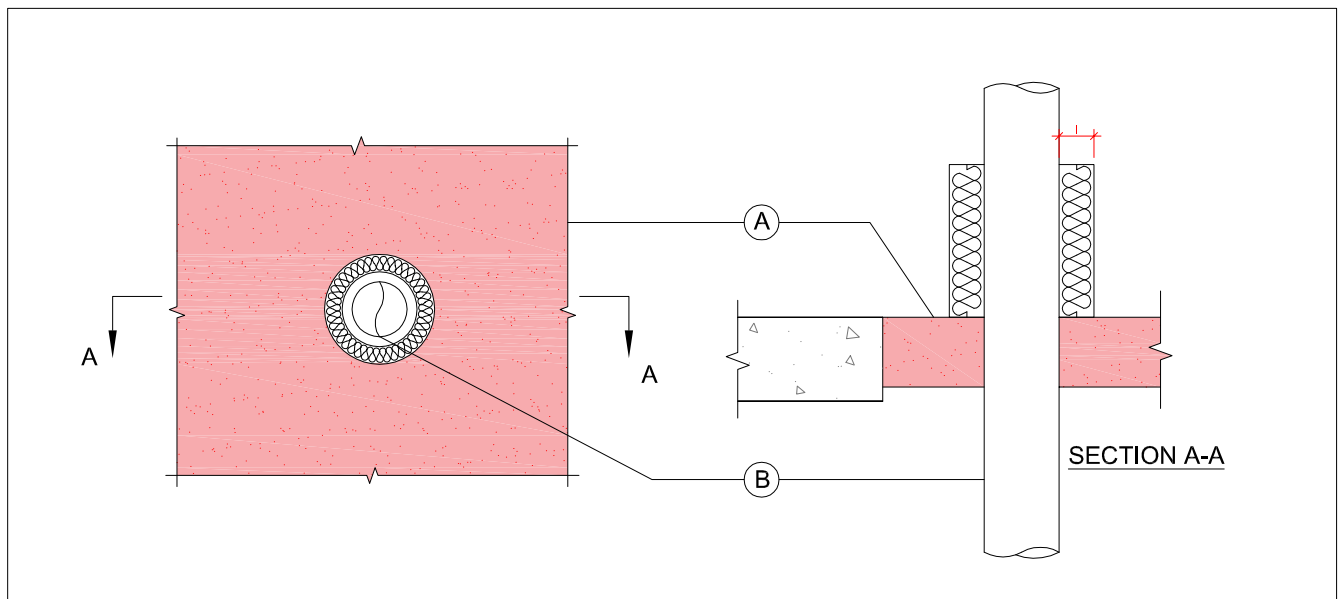
Up to 2hr



Up to 2hr



Rw (C;Ctr)=50(-1;-4)
(EN 10140-2)



Penetration seal with fischer FFSC FireStop Compound installed the 100mm depth of the floor, maximum seal size 1800mm x 1800 mm [A]

Type of penetration [B]	Diameter	Wall thickness	Pipe Insulation	Integrity (in minutes)	Insulation (in minutes)	End Cap Configuration
Copper Pipe	≤ 107 mm	14.2 mm	50 mm Rockwool (150kg/m ³) [I]*	60	15	C/U
Steel Pipe	≤ 115 mm	14.2 mm		120	120	C/U
	≤ 160 mm			120	90	C/U

* Insulation Local Interrupted, applied 500 mm from top side of floor

The instructions and information within this document have been produced with the greatest possible care. However, any liability of fischerwerke GmbH & Co. KG for any errors in this document and for the consequences of such is excluded. Likewise, any liability of fischerwerke GmbH & Co. KG for direct or consequential damages arising in connection with the use of the stated products is excluded. All applications of the stated products have always to comply with the related approvals and installation instructions as well as applicable regulations of the relevant authorities at site.



fischerwerke GmbH & Co. KG Klaus-Fischer-Straße 1, 72178 Waldachtal Germany
Phone: (0049) 7443 12-12-0 / Fax: (0049) 7443 12-4222 / E-mail info@fischer.de

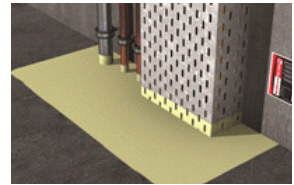
180503-CFD-16-ETA-C-1-1-1

Issue 01

fischer FFSC FireStop Compound

Substrate: Concrete Floor
Type of penetration: Cable Trays / Cables

APPLICATION



APPROVALS
ETA 14/0387



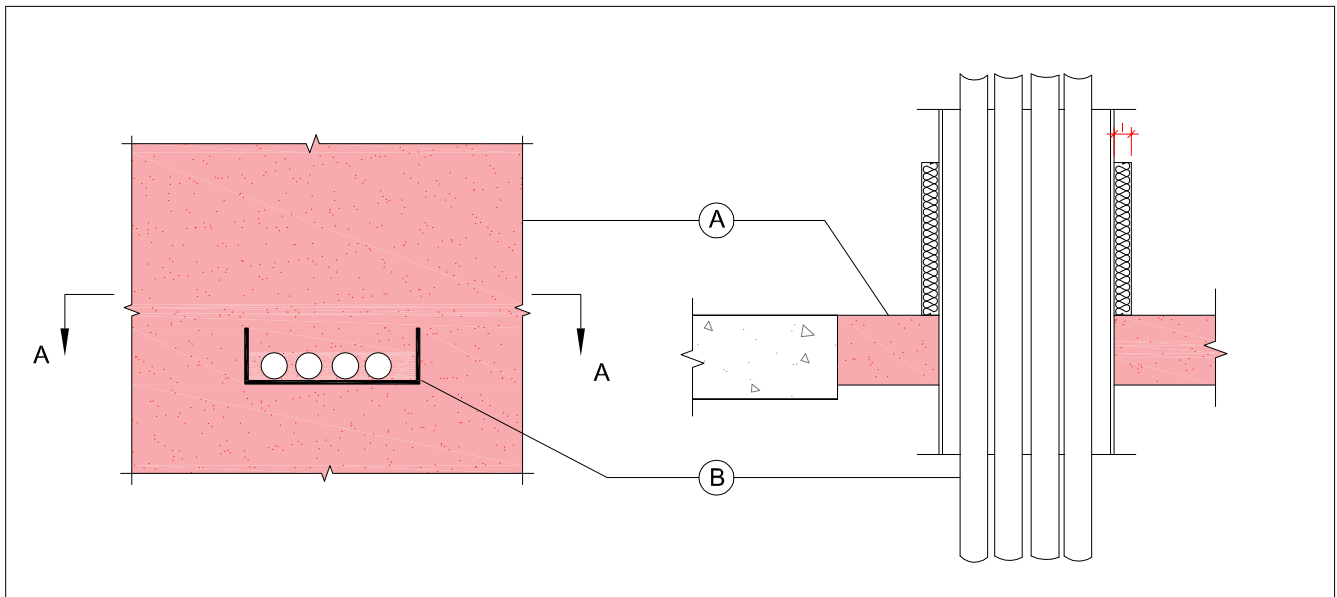
Up to 2hr



Up to 2hr



Rw (C;Ctr)=50(-1;-4)
(EN 10140-2)



Penetration seal with fischer FFSC FireStop Compound installed the 100mm depth of the floor, maximum seal size 1800mm x 1800 mm [A]

Type of penetration [B]	Diameter	Pipe Insulation	Integrity (in minutes)	Insulation (in minutes)
Cables and Cable bunches (Cable Tray optional)	≤ 24 mm Ø	25 mm Rockwool Duct Wrap (45kg/m ³) [i]*	120	120
	≤ 80 mm Ø			
Telecomm cables	of up to 100 mm Ø **			

* Insulation Local Interrupted, applied 500 mm from top side of floor

** An additional 50mm thickness of compound is applied round the upper side of the cables

The instructions and information within this document have been produced with the greatest possible care. However, any liability of fischerwerke GmbH & Co. KG for any errors in this document and for the consequences of such is excluded. Likewise, any liability of fischerwerke GmbH & Co. KG for direct or consequential damages arising in connection with the use of the stated products is excluded. All applications of the stated products have always to comply with the related approvals and installation instructions as well as applicable regulations of the relevant authorities at site.



fischerwerke GmbH & Co. KG Klaus-Fischer-Straße 1, 72178 Waldachtal Germany
Phone: (0049) 7443 12-12-0 / Fax: (0049) 7443 12-4222 / E-mail info@fischer.de

180503-CFD-16-ETA-C-1-1-1

Issue 01